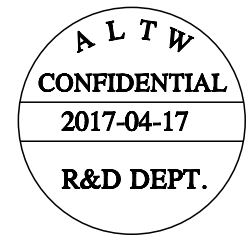
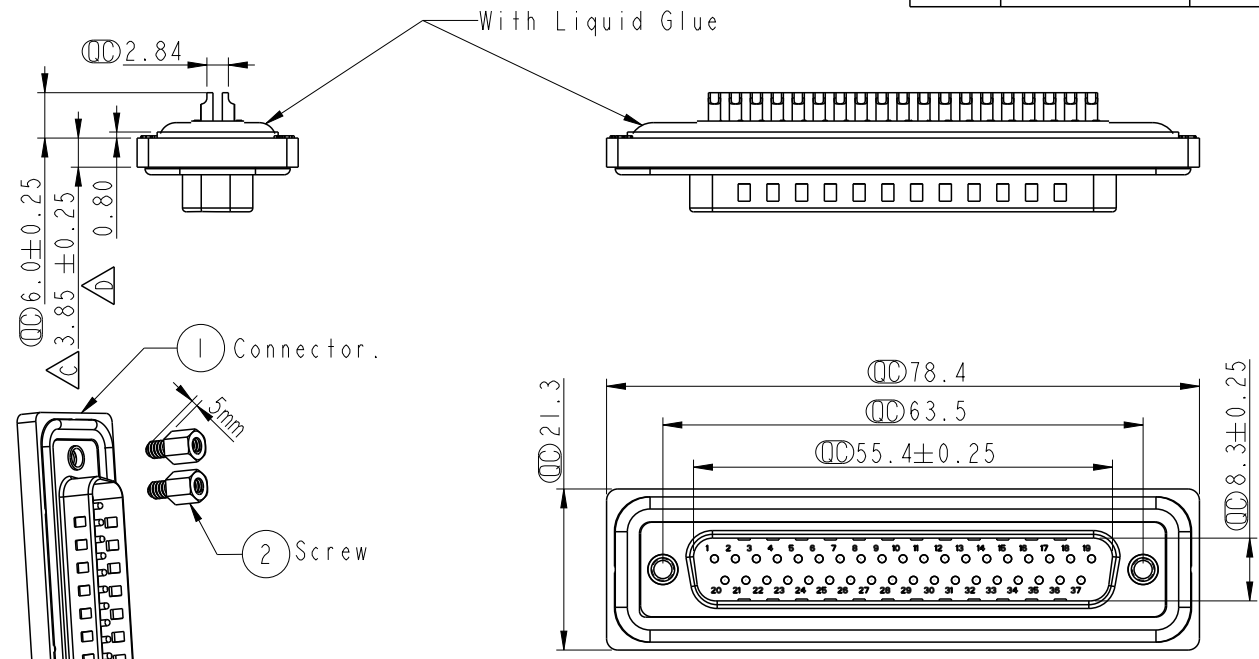


REV.	ECN NO.	DATE	SIGN	DESCRIPTION
C	LEN13B0244	2013/11/12	SAM	Change Dimension.
D	LEN1740003	2017/04/17	Gaotong	Correct tolerance



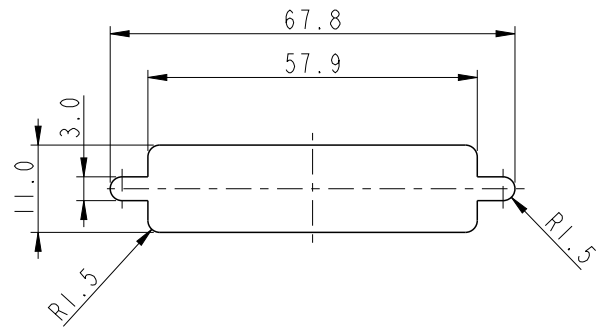
Note:

- * \varnothing Important Dimension.
- * Waterproof Rate: IP67
- * Do Mating Test After Glued
點膠後，須作對插測試
- * Housing: Nylon+GF, Black.
- * Connector: PBT, Black.
- * Male Pin: Copper Alloy, Gold Plated.
- * Ring: Silicone, Light Blue.
- * Screw: Copper Alloy, Nickel Plated, #4-40 UNC.
- * Applicable Wire Range: 22AWG-26AWG.
適用電線範圍：22AWG-26AWG



Screw L=5.0 For Panel Thickness Under 1.2mm
適用板厚為1.2mm 以下

Screw L=6.0 For Panel Thickness Between 1.2~2.0mm
適用板厚為1.2~2.0mm



Recommended Panel Cut-Out
建議挖孔尺寸

UNIT: mm		
TOLERANCE	.X	±0.25
	.XX	±0.1
	.XXX	±0.05
	ANGLES	±1°

TITLE D-SUB Conn. Panel Screw DB37P M Conn. M Pin			
SCALE	SIZE	SHEET	OF
1:1	A4	1	1
REV.	WC-REV.	\varnothing : Inspection item	
D	A.5		

Amphenol LTW
安費諾亮泰企業股份有限公司

ITEM NO	SDB-37PMMS-SL7001	DRAWN BY	Gaotong	DATE	2017/04/17
DWG NO	SDB-37PMMS-SL7001	CHECKED BY	Kris	DATE	2017/04/17
CUSTOMER	ALTW	APPROVED BY	Max	DATE	2017/04/17

THIS DOCUMENT IS SUBJECT TO CHANGE WITHOUT NOTICE. IT IS CONFIDENTIAL AND A PROPERTY OF Amphenol LTW. DISCLOSURE TO THIRD PARTY HAS TO BE AUTHORIZED BY Amphenol LTW.

A B C D E F