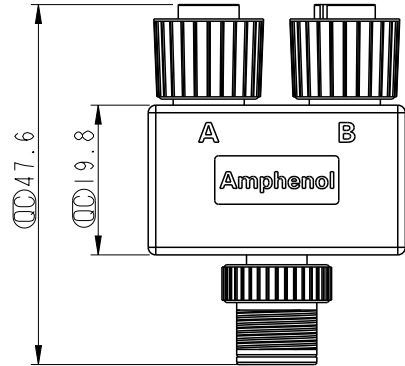
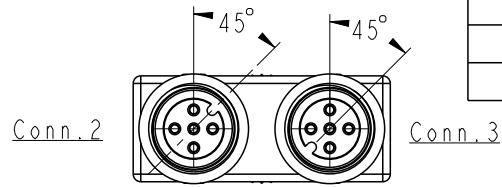
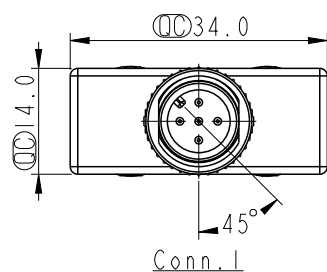


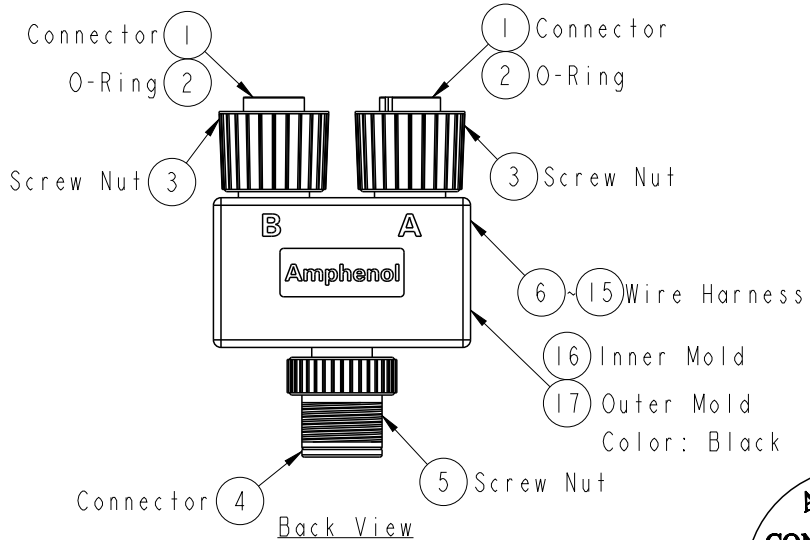
REV.	ECN NO.	DATE	SIGN	DESCRIPTION
B		2019-04-16	Cynthia	△ X2



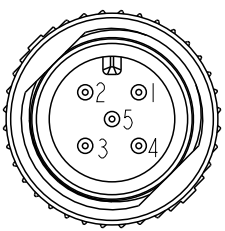
Front View



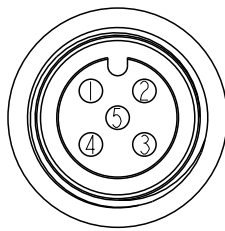
Conn. 1



Back View



△ Conn. 1
Pin Assignments
Front View



△ Conn. 2 & Conn. 3
Pin Assignments
Front View

5	Green	綠	5	5
4	Black	黑	4	4
3	Blue	藍	3	3
2	White	白	2	2
1	Brown	棕	1	1
Conn. 1	Wire Color		Conn. 2	Conn. 3
Pin Out				

ALTW
CONFIDENTIAL
2019-04-16
R&D DEPT.

Note:
 * ∅ Important Dimension.
 * Waterproof Rate: IP68.
 IP68: 1M Depth Of Water In 24hours.
 * Housing: Polyurethane, Black.
 * Pin: Copper Alloy, Gold Plated.
 * Nut: Zinc, Nickel Plated.
 * Wire Harness: UL1007 22 AWG.

UNIT:mm	
TOLERANCE	±0.5 mm

TITLE Y Adaptor M12 5 Pin			
SCALE 1:1	SIZE A4	SHEET 1 OF 1	
REV. B	WC-REV. A.2	∅: Inspection item	

Amphenol LTW
安費諾亮泰企業股份有限公司

ITEM NO SS-050505-MFF-YS001	DRAWN BY Cynthia	DATE 2019-04-16
DWG NO SS-050505-MFF-YS001	CHECKED BY Wen	DATE 2019-04-16
CUSTOMER ALTW	APPROVED BY Neo	DATE 2019-04-16

THIS DOCUMENT IS SUBJECT TO CHANGE WITHOUT NOTICE. IT IS CONFIDENTIAL AND A PROPERTY OF Amphenol LTW. DISCLOSURE TO THIRD PARTY HAS TO BE AUTHORIZED BY Amphenol LTW.